

AlphaCom E20 Exchange

Features

- Next generation multiservice platform with integrated media processing engine, packet processing engine, HW encryption and storage module
- Made for critical communication and security solutions
- Embedded real time Linux operating system
- Best of both worlds – supports a mix of IP and traditional services within the same node
- Backward compatible
- SIP interoperability with VoIP systems and equipment
- Wide range of open interfaces
- Superb audio quality in all environments
- New services through Web i.e. remote programming
- Networking capabilities to extend your solution geographically

Description

The AlphaCom E combines the best of the present advanced AlphaCom system with the latest IP, Linux and embedded networking technologies. When entering the IP world, no compromise has been made. The AlphaCom E provides the complete set of existing services, quality, reliability and security characteristics for which AlphaCom has always been recognized.

Some of the special features it brings into the IP domain are wideband (7 kHz) audio, a built-in firewall, integrated Web and SIP server, hardware encryption and low latency switching.

In addition to these important characteristics, a new set of innovative services has been introduced to improve cost efficiency, service capabilities and system operation.

The cabinet has room for installation of totally 20 circuit boards, one AMC-IP processor board, one APC program & clock board and up to 18 feature boards. The exchange also includes a mains power supply and a cooling fan.

Several exchanges can be interconnected on AlphaNet over IP, as well as the traditional methods, both locally and worldwide. All communication and services are available throughout the entire network.

The AlphaCom E-series includes extended integration of different kinds of communication and alarm systems, access control, CCTV, public address, public telephones and a variety of features and solutions that can be added when desired. It is easy to interface to 3rd party systems to create special applications.

The new technology allows remote programming, logging and maintenance via AlphaPro, Syslog and standard web browsers.

AlphaCom E System

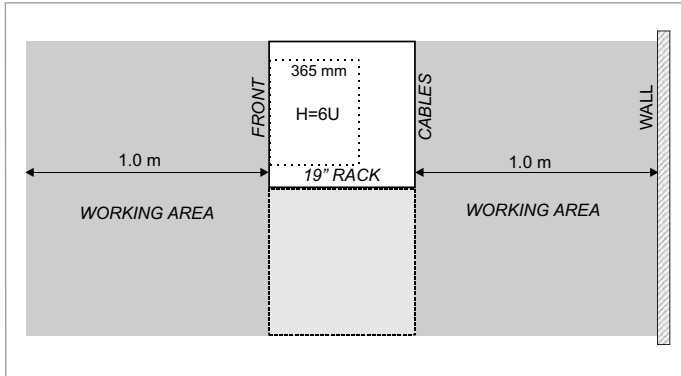


Specification

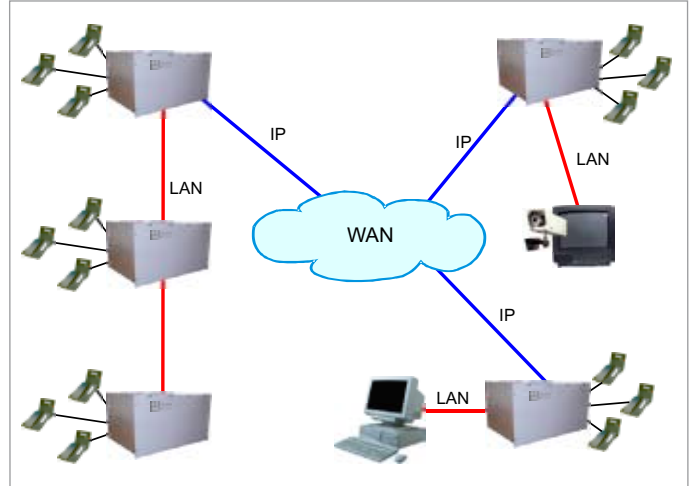
Dimensions (WxHxD)	482 x 265 x 365 mm
Weight	17 kg
Mounting	19" rack
Input voltage	90 - 270 VAC
Power consumption	max. 450 W (80 subscribers)
Temperature	0 to +35°C / +32 to +95°F environment
Humidity range	10% to 90% RH
Connections:	
Feature cards	18 slot positions
Traditional intercom	80 extensions with one power supply 102 max. physically
Entertainment channels	6 on APC board + 16 per AGA board
Remote control outputs	6 per ASLT subscriber board
Remote control inputs	6 on APC board
Serial port	1 x RS232, RJ-45
Serial port	1 x RS232/RS422/RS485, RJ-45
Ethernet	2 x 10/100 Mbps, RJ-45
Traffic capacity:	
SIP trunks	30 channels
VoIP AlphaNet	30 channels
Digital trunks	32 channels
Analogue trunks	6 channels
IP protocols	IP v4/v6 - TCP - UDP - Telnet - FTP - NTP HTTP 1.1 - Syslog - SNMP v2c - SIP - RTP - RTCP - VoIP AlphaNet - STENTOFON data
Audio technology	High-Resolution 1-Bit Audio - High-Fidelity 40 Hz-18.5 kHz - Wideband 7 kHz (G.722) - Narrowband 3.4 kHz (G.711) - Adaptive Jitter Buffers - Adaptive Time Synchronization
EMC	Emission: IEC 61000-6-3, IEC 61000-6-4 Immunity: IEC 61000-6-1, IEC 61000-6-2
Compliance	CE, DNV, Report no. 97-1341, EN 60950

AlphaCom E20 Exchange

Installation



Networking



Connections

Up to 4 units may be mounted in one 19" rack if sufficient ventilation is provided. It is recommended to mount a 24 VDC cooling fan module on top of each exchange unit.

The two-pair star wired intercom cables are connected to connection boards on the cabinet DIN rail or in a separate distribution field.

Each subscriber line card provides 6 freely programmable Remote Control Outputs (RCO's).

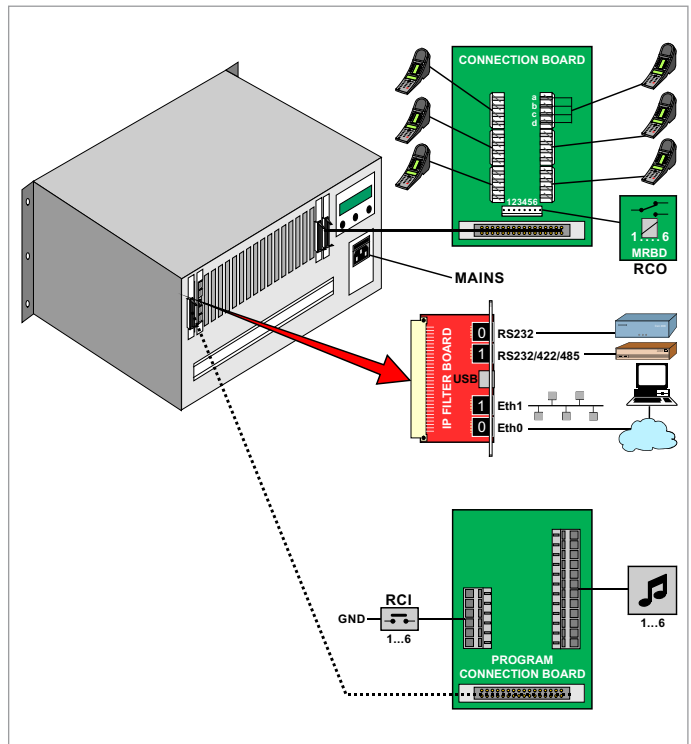
Two RJ-45 Ethernet terminals on the IP filter board are used for IP LAN and WAN communication.

The serial ports with RS232 and RS422/RS485 interface are used for interface to equipment using these protocols. Eth0 is also used for programming PC.

6 program distribution sources can be connected to the APC board via an optional program connection board. Up to 32 extra programs may be added using AGA boards, 16 programs per board.

The optional program connection board has input for 6 Remote Control Inputs (RCI) which can initiate programmed actions.

The exchange is powered from the mains.



Ordering information

Order Number	Description	Ship Weight
100 9620 000	AlphaCom E20 with 2 ASLT boards for 12 subscribers	19 kg
100 9291 100	AlphaPro E Professional, programming tool	HW dongle



ZENITEL NORWAY AS
www.zenitelcss.com
info@zenitelcss.com

